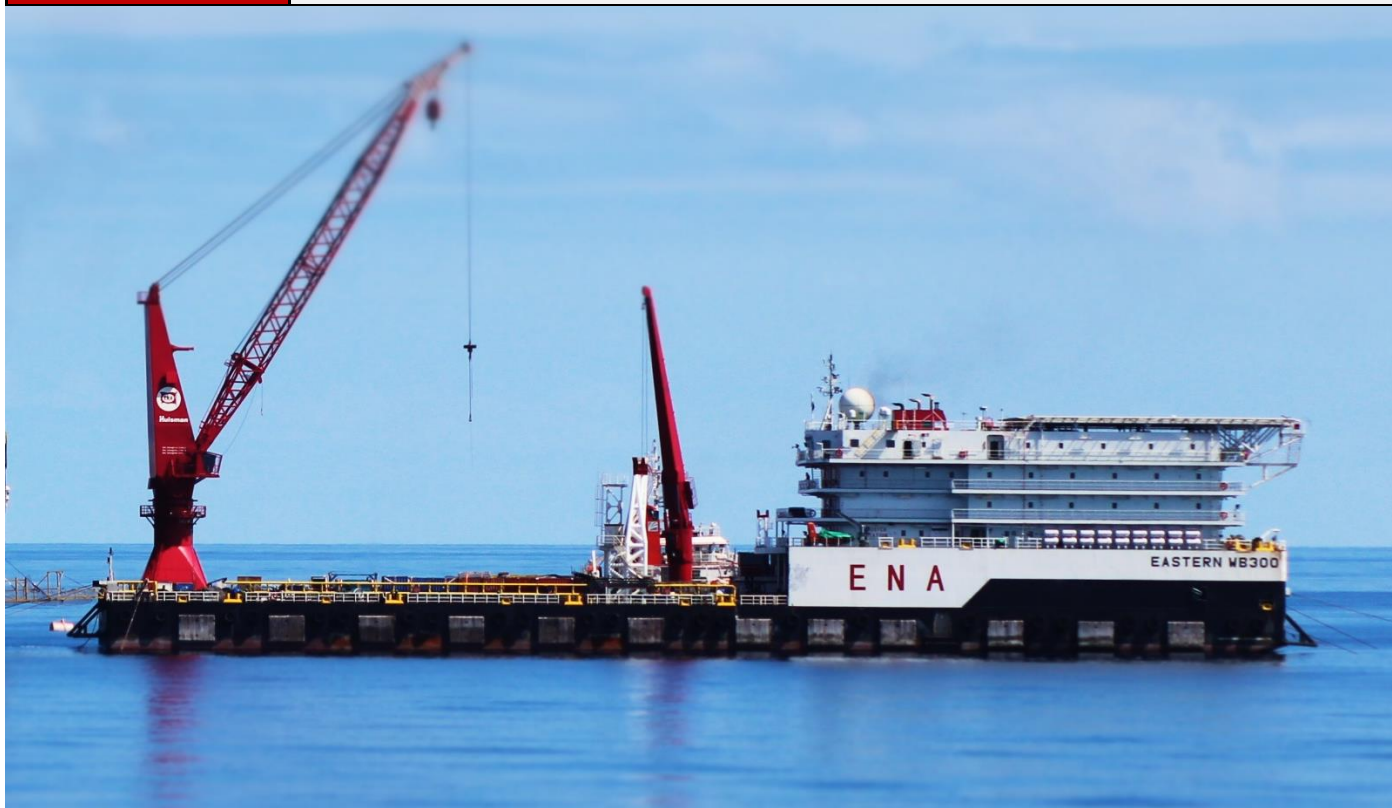


Eastern WB300

300 Man / 8 Point / 300MT+25MT Crane / Accommodation/Work Barge



Eastern WB300

300 Berths in en-suite cabins
8 Point Mooring System
Built 2012
300MT, Man Riding Main Crane
25MT, Auxiliary Crane
1,700 m ² Open Deck Space
1,100 m ² Covered Deck Space
Helideck
Fitted with Cinema, Offices, Recreation etc

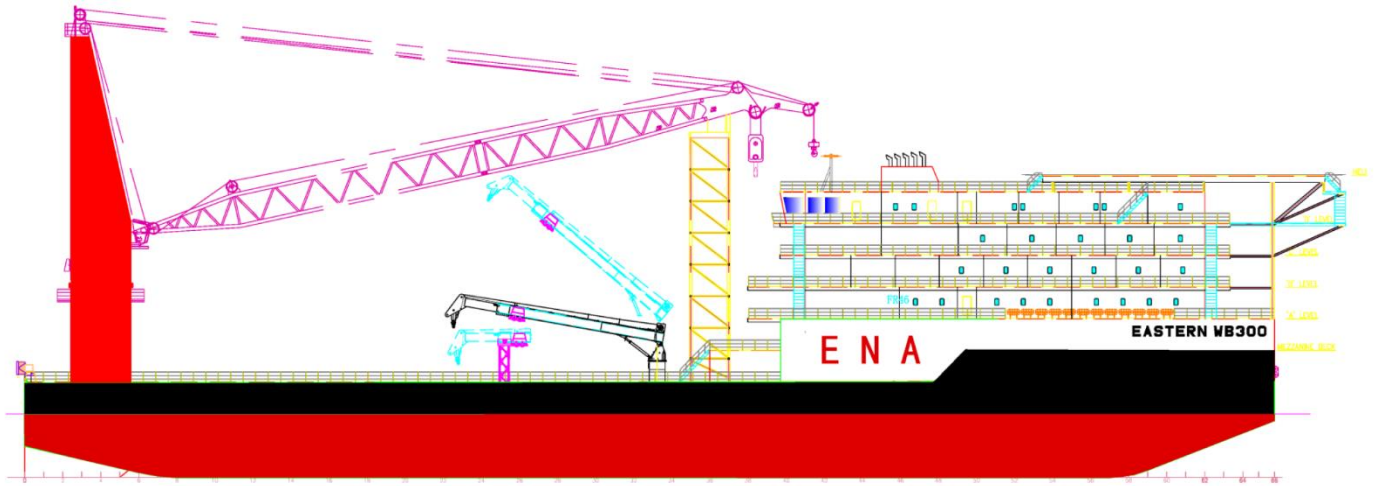
For further information, please contact us:
Email: marketing@easternnavigation.com
Telephone: +65 6268 3222

Eastern WB300

Published 21/10/2016 | Page 1

Eastern WB300

300 Man / 8 Point / 300MT+25MT Crane / Accommodation/Work Barge



Summary

The Eastern WB300 is a 300 Man Accommodation and Work Barge built for the Offshore Oil and Gas industry.

She has the following key features:

- 300 MT Offshore, Man-Riding Crane located on her port side stern, and a second 25MT auxiliary crane for sim-ops
- Largest and deepest hull in her class at 9 meters, with up to 6 meters operating draft, for greater stability, safety and comfort while offshore, and less chance of green deck
- Accommodation for 300 passengers in comfortable, air-conditioned 1, 2 and 4 man cabins
- Largest in class covered and uncovered clear deck space for flexible operations

The unit has been proven through South East Asian monsoon, and with an optional hydraulic gangway is capable of maintaining 95% uptime alongside a platform in 3-4 meters wave height.

She is capable of the following duties:

- Offshore Accommodation for maintenance, HUC and shutdown campaigns, even in monsoon conditions
- Offshore construction and diving platform
- Capable of modification to support Hydraulic Workover, Wireline and Well Intervention operations



Eastern WB300

Published 21/10/2016 | Page 2

Eastern WB300 300 Man / 8 Point / 300MT+25MT Crane / Accommodation/Work Barge

Principal Particulars

Flag	Panama
Built	2012
Length	120.00 m
Beam Overall	31.70 m
Depth Moulded	9.00 m
Design Draft	6.00 m
Deadweight	About 10,875 tons
Helideck	Suitable for Sikorsky S92N Helicopters, compliant with CAA-CAP437 Regulations

Classification

ABS +A1, Barge

Capacities

Fuel Oil	2,126 m3
Potable Water	5,080 m3
Mud	674 m3
WB/DW	5822 m3 / 2,955 m3
Lube/Hydraulic	8 m3 / 8 m3
Sewage	196 m3
Bilge	112 m3
Open Deck	1,700 m2 Wood Sheathed: 1,400 m2
Covered Deck	1,100 m2
Total Deck Area	2,800 m2
Deck Cargo	About 4,000 tons
Deck Strength	15 tons/m2

Discharging Rates

Fresh Water	1 x 120 m3/hr @ 60 m head
F.O cargo	1 x 120 m3/hr @ 60 m head
F.O transfer	1 x 42 m3/hr @ 45 m head
Drill Water	1 x 120 m3/hr @ 60 m head
Ballast Water	2 x 500 m3/hr @ 50 m head
Liquid Mud	2 x 100 m3/hr @ 80 m head
Flow Meter	Fitted for Fuel and FW lines

Life Saving / Rescue Equipment / Pollution Control

Fast Rescue Boat	1 x 6 Pax
Life Raft & Davit	36 x 25 men, conforming to SOLAS convention
Firefighting	1 x 80 m3/hr @ 70m head (emergency fire pump) 2 x 130 m3/hr @ 80m head (Fire Pumps)
Foam fire-fighting system for helideck, sprinkler system, fixed CO2 system	

Machinery

Generators	5 x 590 kW diesel generators @ 440V, 3 Phase, 60Hz 1 x 95 kW emergency diesel generator
Air Compressors	2 x 750 CFM @ 8.6 bar

Lifting Equipment

Main Crane	1x 300MT Huisman Crane Main Hoist: - 300MT SWL@ 11m radius - 50 MT @ 48m Auxiliary Hoist: - 30MT SWL@53m radius (max) Boom Length: 50.7 m API-2C, Built to ABS Rules, Man-Riding
Auxiliary Crane	1 x 25 MT @ 26 m, fixed boom, API-2C designed.

Spread Mooring Equipment

Mooring Winch	4 Sets Double Drum Winch 8 Mooring Drums Drum Pull (1 st Layer): - 8 x 90MT @ 12 m/min Drum Capacity: - 1,500m x 52mm Brake Holding: - 7 x 180MT (static) - 1 x 210MT (static) (Anchoring Winch) c/w Length and Tension meters
Tugger Winches	2 x 15MT @ 10m/min 22.5MT Brake Holding 250 m x 28 mm Drum Capacity
Capstans	4 x 10 MT @ 20 m/min
Anchors	8 + 2 Delta Flipper anchors, 10MT
Associated Equipment	Anchor Wire Fairleads, Sheaves, Anchor Racks
CCTV	All Winches and Deck, Personnel Landing Area

Eastern WB300

300 Man / 8 Point / 300MT+25MT Crane / Accommodation/Work Barge

Accommodation

1-Berth Cabins	8, ensuite
2-Berth Cabins	16, ensuite
4-Berth Cabins	65, ensuite
Berths - Total	300
Hospital	3 Berth
Recreation/Movie Room	2 x Recreation Room 1 x Cinema
Office	8 of varying sizes for clients
Conference Room	1 x 50 pax capacity
Gym	1, with running machine, spinning, weights and machines
Waiting Room	1 x 14 pax helicopter waiting room
Galley	1 x Galley with adjoining Bakery
Chiller/Freezer	For 300 pax, 30 Days Endurance
Provisions	For 300 pax, 30 Days Endurance
Water Maker	2 x 60 MT/day R.O. type

Navigation and Communication Equipment

X-Band Radar, Echo Sounder, GPS, Satellite Compass, GMDSS (Area 3), VHF Transceiver, SSB Radio, 2 x VHF Radio, 3 x GMDSS VHF Handheld Radio, 1 x EPIRB, 1 x NAVTEX, 2 x INMARSAT-C Terminal (with SSAS), 1 x Air-Band VHF, 1 x NDB, 3 x Portable VHF, 1 x Weather Fax, 1 x Anemometer, 1 x FBB Satellite Phone

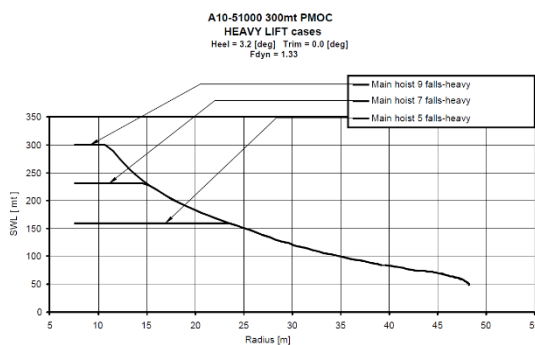
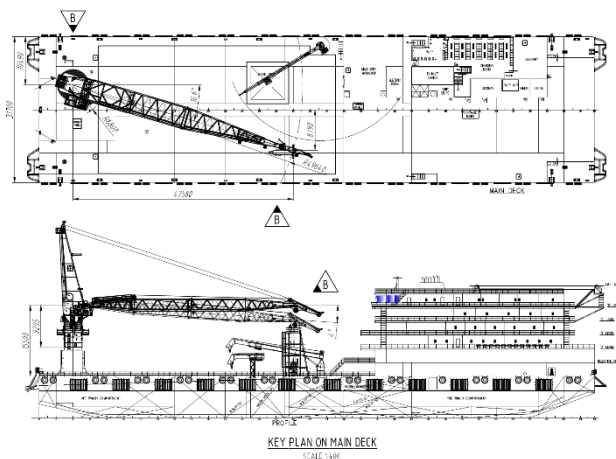
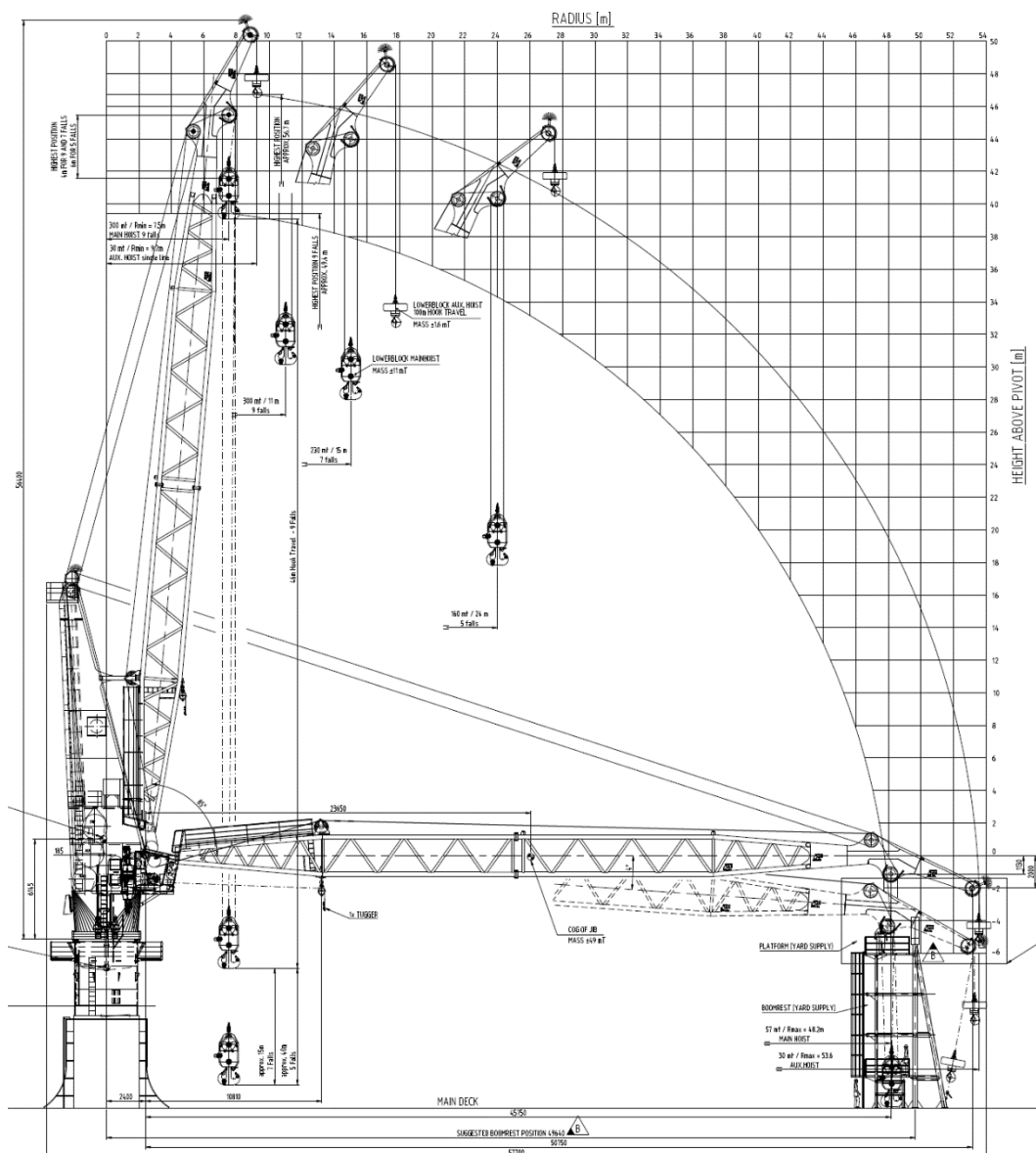
Additional Equipment

Sewage Treatment Plant	2 x 150 men capacity
Fuel Oil Purifier	2 x 2,600 litres/hr
Oily Water Separator	1 x 1 m3/hr, 15ppm
Refrigeration System	Non-CFC R404a
Hot Water Calorifier	3 x 1,000 litres capacity
Waste Compactor	1 x 500 kg/hr
Floodlights	26 x 1,000W Metal Halide
Searchlight	4 x 2,000W
Workshop	Deck Workshop fitted with Lathe, Drilling Machine, Grinding Machine, Welding Machine and Monorail
Forklift	1 x 7MT Deck forklift 1 x 1MT Provisions store forklift
Moonpool	7 x 7 meter, mid-ships port
Gangway	1 x 22.7m long, 1.5m wide gangway (for platform installation)
MODU Code	Statement of Compliance

Note: In GA plan, "D" level, OFFICE (S) is already changed into Helideck passenger check point.

Eastern WB300

300 Man / 8 Point / 300MT+25MT Crane / Accommodation/Work Barge

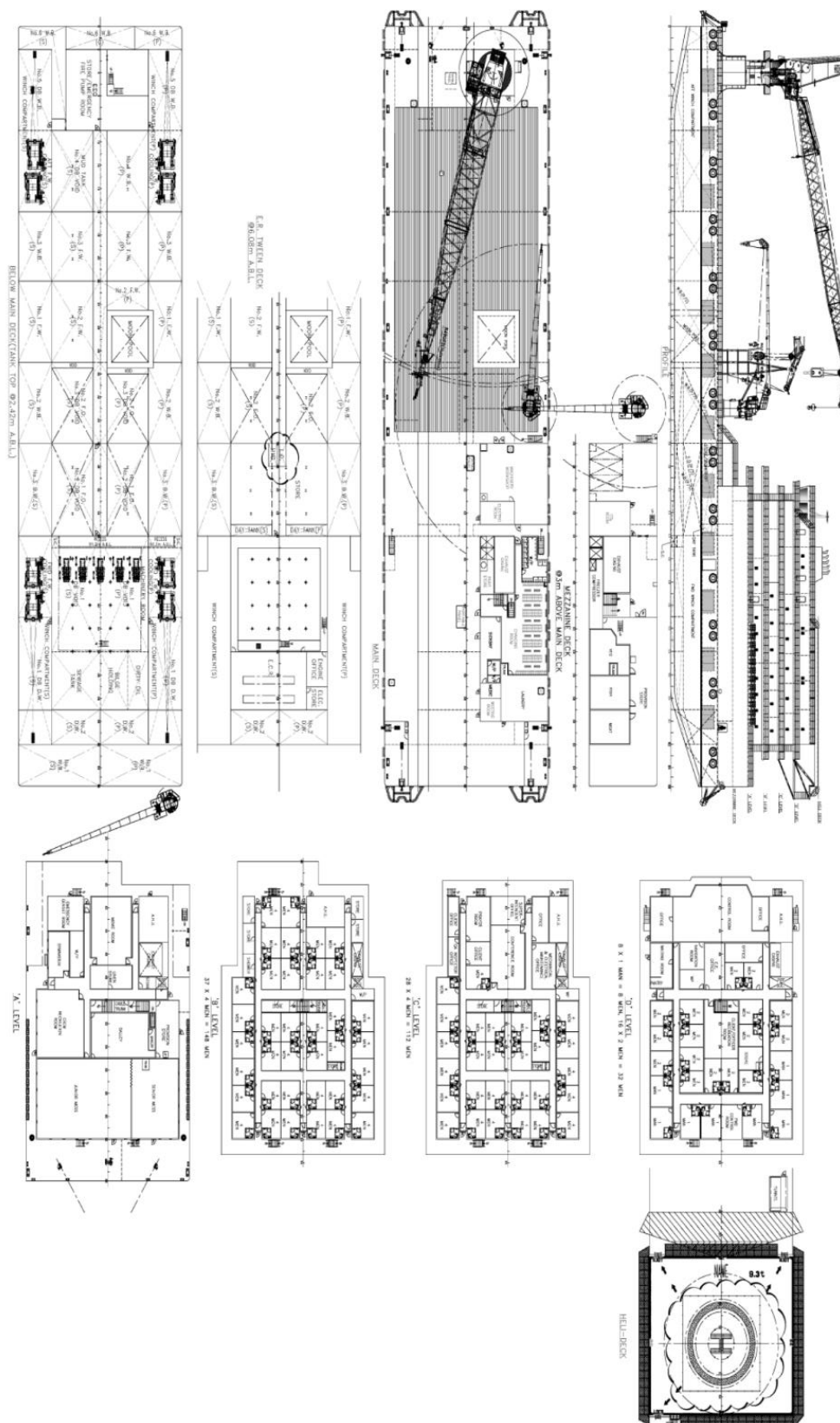


Eastern WB300

Published 21/10/2016 | Page 5

Eastern WB300

300 Man / 8 Point / 300MT+25MT Crane / Accommodation/Work Barge



Eastern WB300

Published 21/10/2016 | Page 6