

Name of Vessel	Eastern Republic,
Type of Vessel	Steel Dumb Barge
Flag	Singapore
Class	A.B.S
Built	2005, P.T Pandan Bahari Shipyard , Batam
Gross Tonnage	2434
Net Tonnage	730
Length	250 feet
Breadth	80 feet
Depth	17 feet
Draft	3' 0" (light); 13' 7.5" (loaded)
Deadweight	5,600 tons
Deck Loading Capacity	15 tons per square metre
Scantlings	Top, 15 mm Side, 12 mm Bottom, 15 mm
Number of Bulkheads	2 longitudinal + 8 transverse
Deck Equipment	1 x 5,000 KG Manual Anchor Winch 1 x 1020 KG Stockless Anchor 10 Twin Bitt Bollards

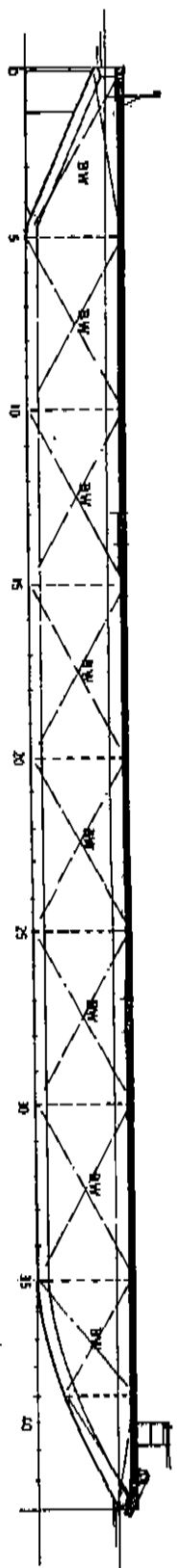
Particulars given are entirely without warranty as to correctness and interested parties must satisfy themselves by inspection of ship's certificates or by other means of vessel specifications / inspections

EASTERN NAVIGATION PTE. LTD.

TITLE: EASTERN REPUBLIC

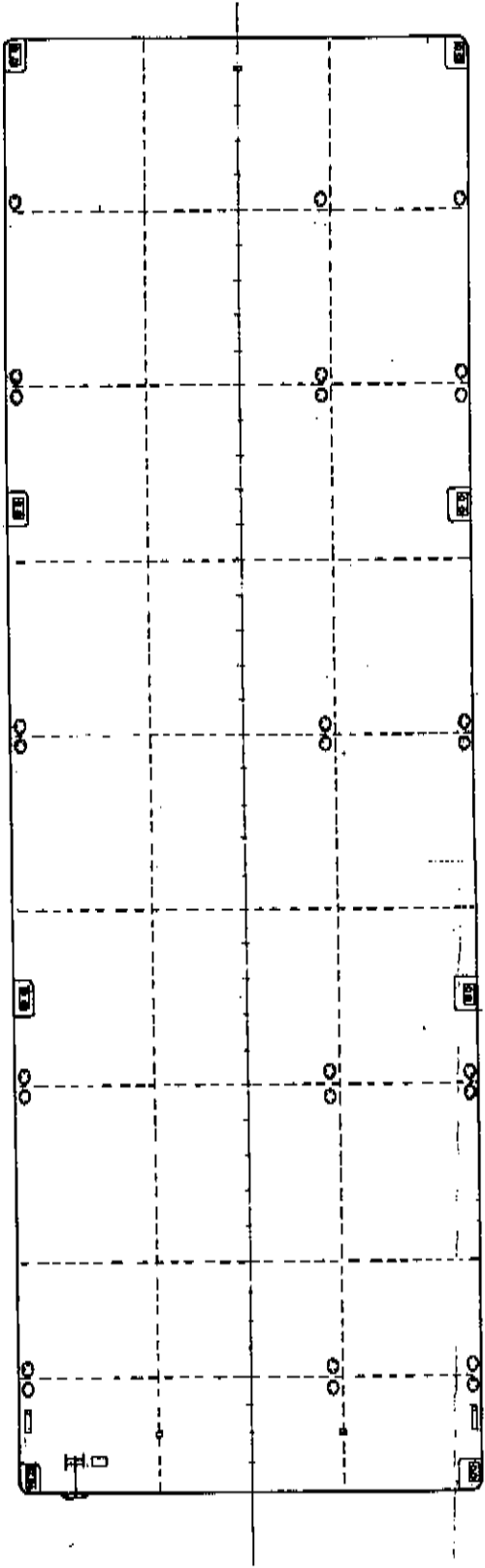
250' x 80' x 17' TANK BARGE
GENERAL ARRANGEMENT

DRWN: ST	DATE: 12.98	S822-H3
SCALE: 1/16		



PROFILE

SHIPS COY
REVIEWED
as per spec in
ABS LECTR DRAWG
13 JUL 2016
ABS
SMARDINE



DECK PLAN