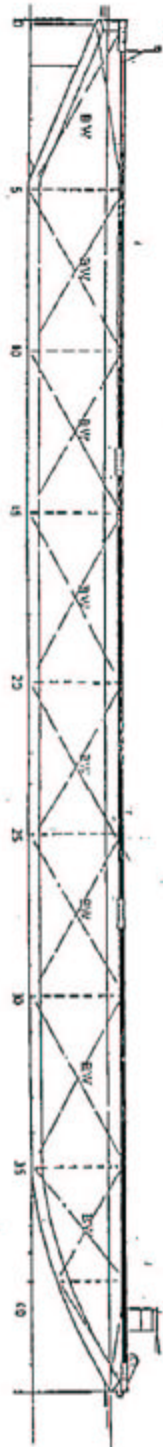


Name of Vessel	Eastern Kingdom
Type of Vessel	Steel Dumb Barge
Flag	Singapore
Class	G.L.
Built	1999 Indonesia
Gross Tonnage	2436
Net Tonnage	731
Length	250 feet
Breadth	80 feet
Depth	17 feet
Draft	3' 0" (light); 13' 7.5" (loaded)
Deadweight	5,600 tons
Deck Loading Capacity	10 tons per square metre
Scantlings	Top, 15 mm Side, 12 mm Bottom, 15 mm
Number of Bulkheads	2 longitudinal + 8 transverse
Deck Equipment	1 x 5,000 KG Manual Anchor Winch 1 x 600 KG Stockless Anchor 10 Twin Bitt Bollards Smit Towing Brackets Forward and Aft 4 feet high x 24" Stanchions -Mounted on Portside and Starboard side

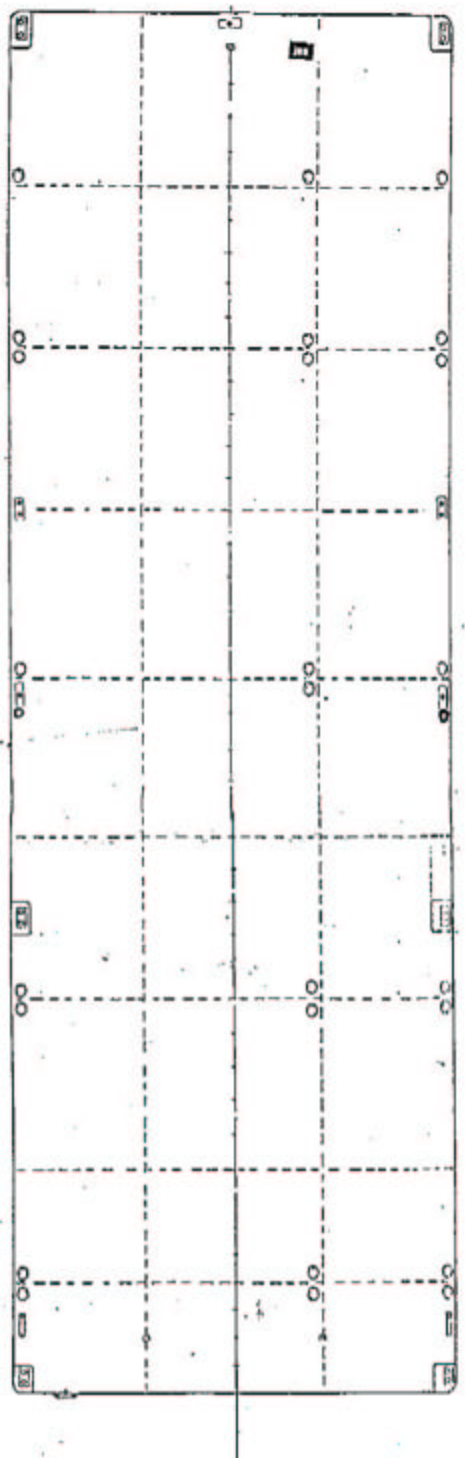
Particulars given are entirely without warranty as to correctness and interested parties must satisfy themselves by inspection of ship's certificates or by other means of vessel specifications / inspections

EASTERN KINGDOM

LADDERING INFORMATION I.E. L.I.V.		
TITLE:		
250' x 80' x 17' TANK BARGE		
GENERAL ARRANGEMENT		
DRWN: ST	DATE: 12.98	S822-H3
SCALE: 1/16		



PROFILE



DECK PLAN

